

SCORPIO

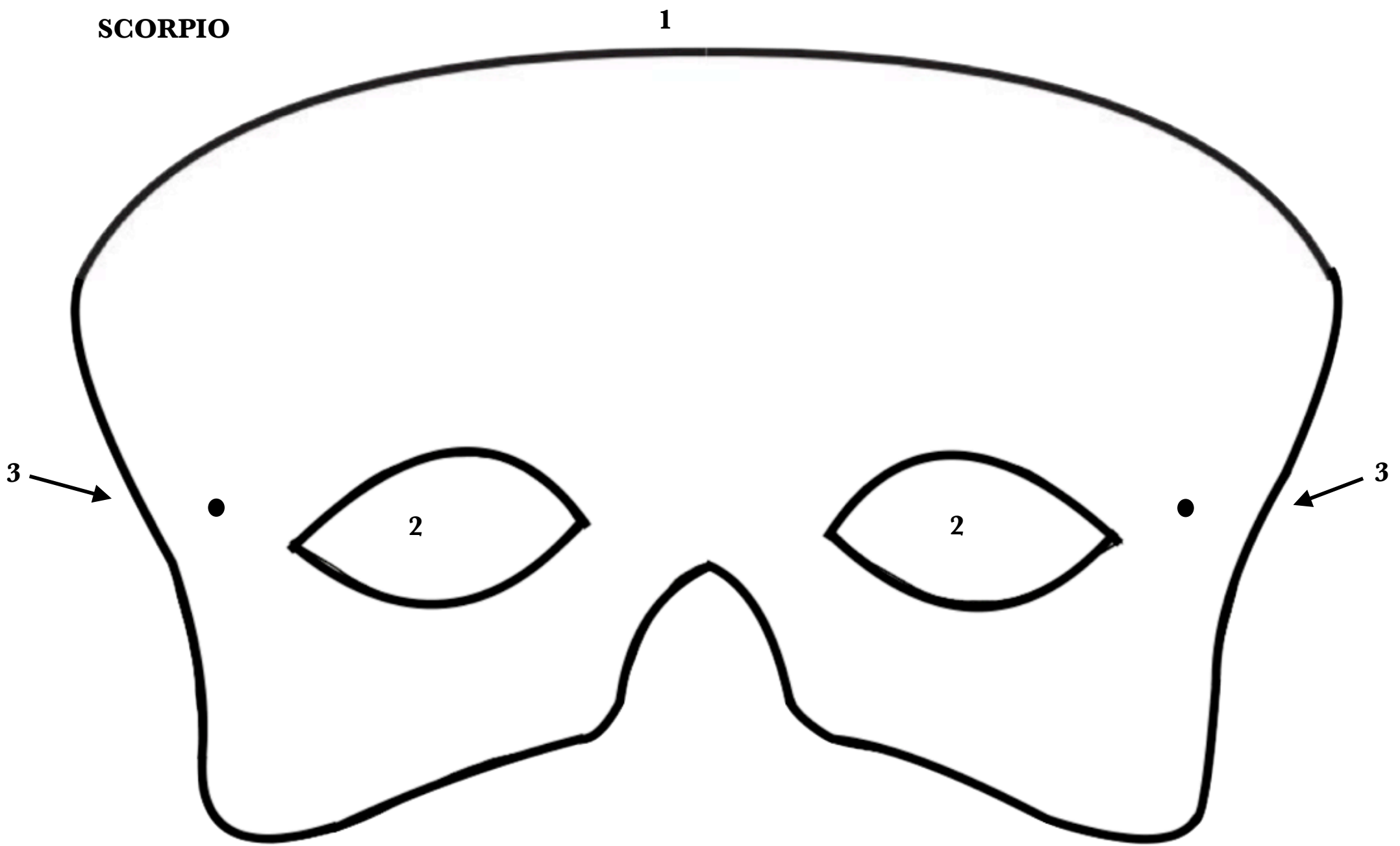
1

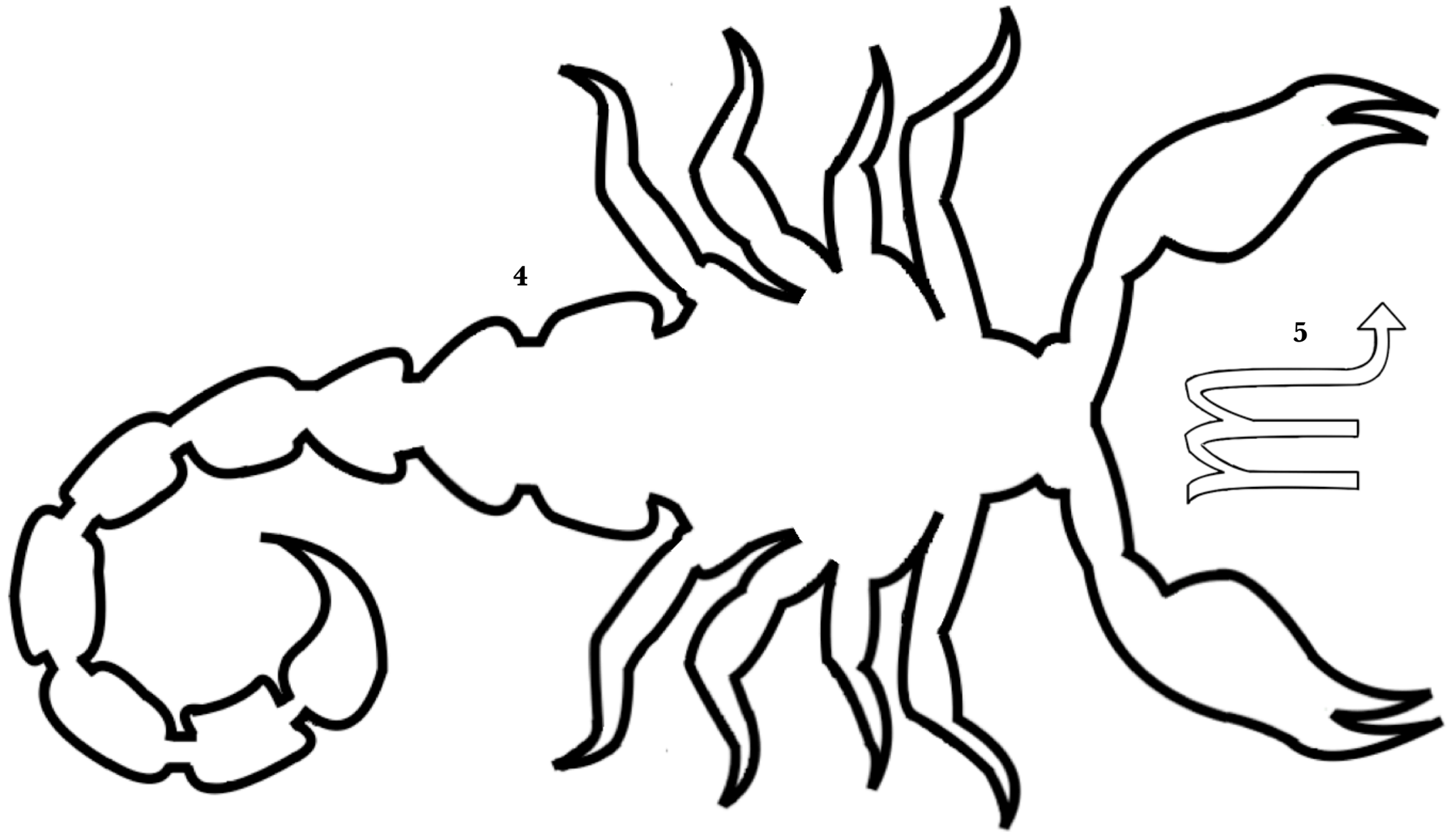
2

2

3

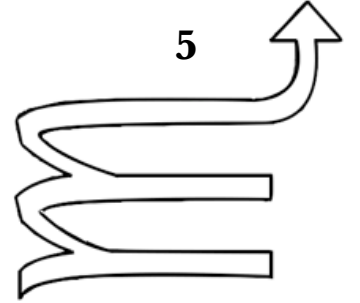
3





4

5



Key to Templates:

- 1) Mask
- 2) Mask eye holes
- 3) Holes for elastic
- 4) Scorpion
- 5) Scorpio zodiac symbol

INSTRUCTIONS FOR MAKING YOUR COSTUME:

- 1) Print out the two previous pages of this pdf on standard A4 paper (landscape format) and cut out the shapes that are numbered in the template key.
- 2) Use the paper shapes as templates to cut out the same shapes from pieces of coloured card. To create a more contrasting impact, use one colour for the scorpion (4) and then a different colour for the mask (1) and the scorpio symbol (5). The colours you choose are entirely up to you, but suggestions for combinations include: red and black, silver and red, black and silver, green and black, or purple and black.
- 3) Stick the scorpion (4) vertically to the mask (1), so that its tail points upwards, its pincers sit below the mask eyeholes (2) and its front legs sit above the eyeholes. Use **Fig. 1** (below) for placement guidance.
- 4) Stick the scorpio symbol centrally, onto the scorpion's body – see **Fig. 1** (below) for placement guidance.
- 4) Use a hole-punch or knife to make the holes for elastic (3) on each side of the mask, and thread with elastic.

5) Finish off your costume by wrapping up warm in comfy, waterproof clothes — then make yourself an over-costume, by draping either a scarf, shawl, or large piece of fabric over your shoulders, in a colour that matches your mask (preferably a bright, or metallic colour, to make a more theatrical impact).

6) You can make your costume even more theatrical by sticking/sewing coloured fabric ribbons to your over-costume – or add feathers, tinsel, sequins... whatever you want to customise your zodiac sign!

Fig. 1



Fig. 2 (same as Fig.1, different colourway suggestion)

